

PROJECT MANAGER WELCOME SCREEN (MAIN MENU)

Once you start the application, the “Project manager Welcome Screen” will be displayed.

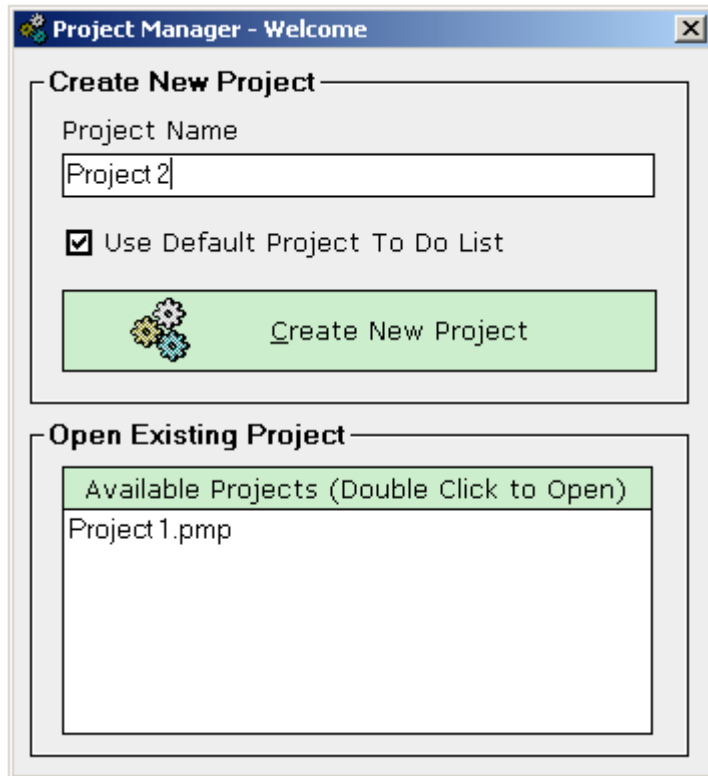


Figure 1: Project Manager Welcome Screen

The following are the parameters and options inside this page:

- **Project name** – input field for setting the name of the new project
- **Use Default Project To Do list** – the application comes with the set of predefined project to do list; you can choose to use this list and modify it according to your needs or start with the blank project and create your own tasks
- **Create New Project** – button for creating a new project after entering the project name
- **Open Existing Project** – this part of the welcome screen gives a list of the already created projects; in order to open the previously saved project, double click on the desired project in the list